

# WESTMORE, AVERY, HARPER



## PROPERTY FEATURES

---

**Please contact MIRANDA CHAN**  
817.992.6211 | [miranda@homesofcharacter.com](mailto:miranda@homesofcharacter.com)  
or visit [homesofcharacter.com](https://homesofcharacter.com) for more information!

  
**VILLAGE HOMES**  
817.737.3377 | [HOMESOFCHARACTER.COM](https://HOMESOFCHARACTER.COM)

GET CONNECTED



\*Actual plan may vary slightly from artist's interpretation.

{ TIMELESS CRAFTSMANSHIP | INNOVATIVE LIVING }

2138 Village Walk Place  
Westmore Plan

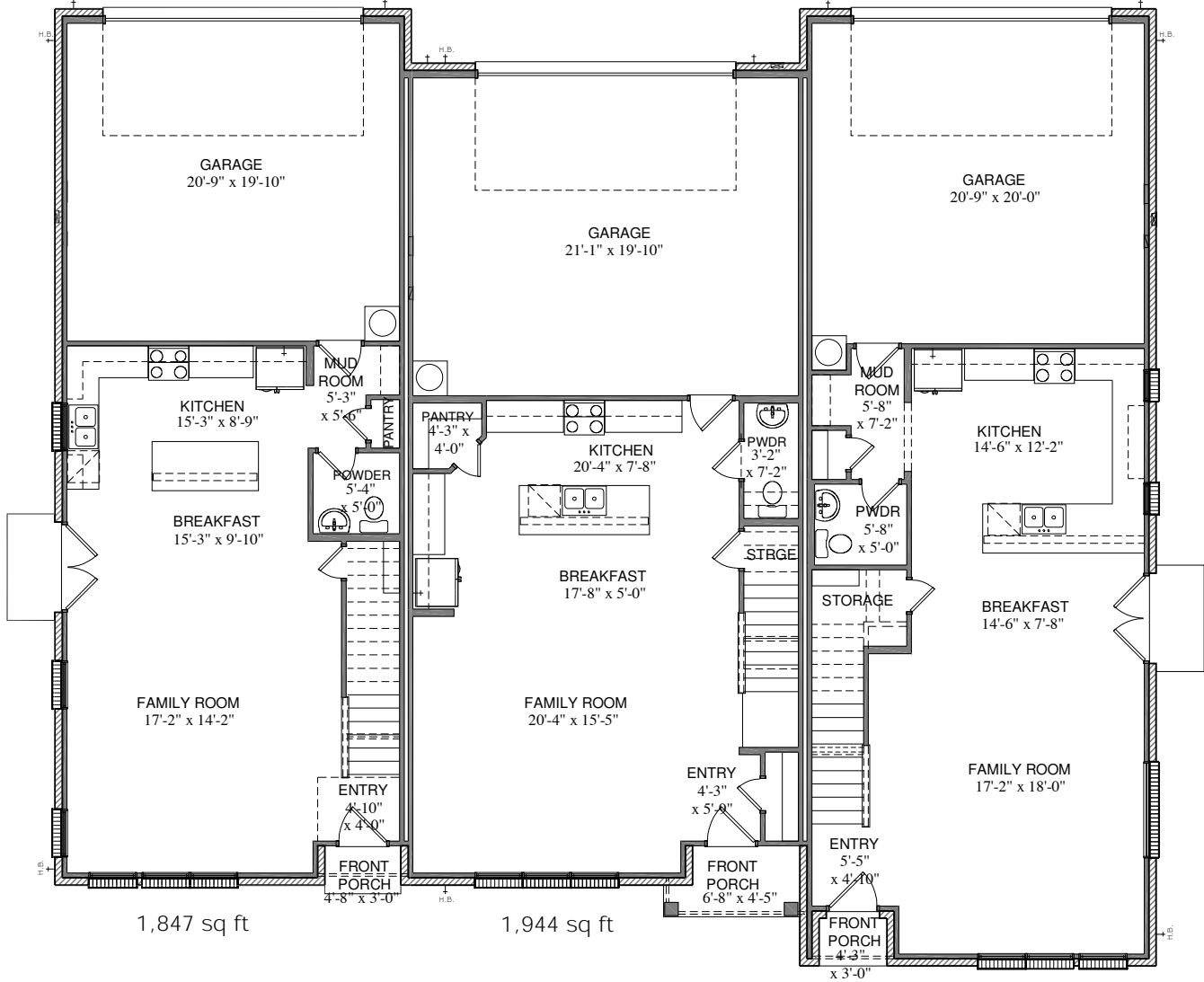
2136 Village Walk Place  
Avery Plan

2132 Village Walk Place  
Harper Plan

UNIT #1

UNIT #2

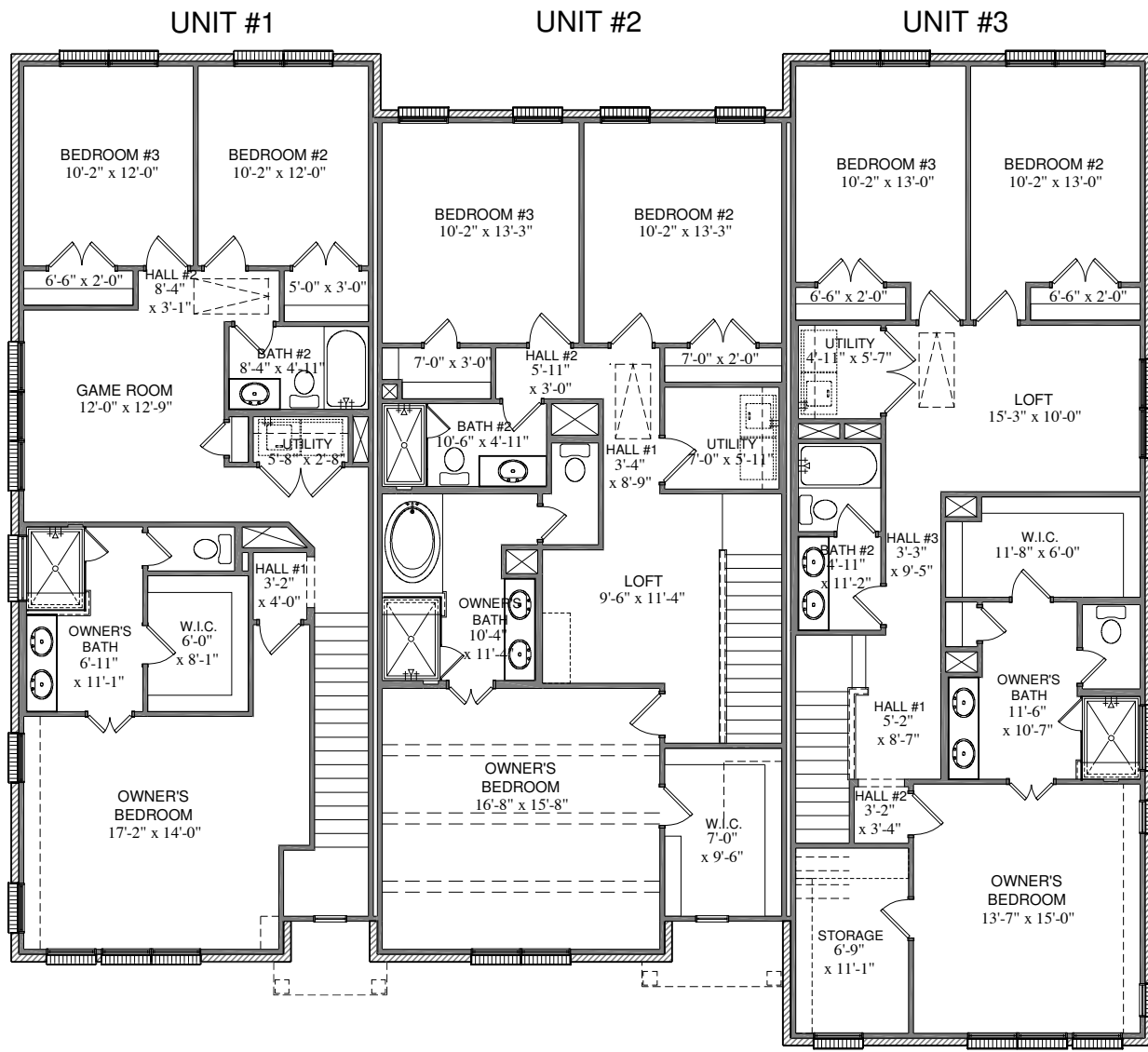
UNIT #3



FIRST FLOOR PLAN

All plans and elevations are subject to change without prior notice. All Village Homes floor plans & elevations are copyrighted. Village Homes will enforce copyright laws to their fullest extent. All plan numbers are approximations of square footage and may vary with alternate elevations.

Please note: In an effort to continually improve our floor plans and elevations, Village Homes reserves the right to make alterations to the designs without prior notice.



SECOND FLOOR PLAN

All plans and elevations are subject to change without prior notice. All Village Homes floor plans & elevations are copyrighted. Village Homes will enforce copyright laws to their fullest extent. All plan numbers are approximations of square footage and may vary with alternate elevations.

Please note: In an effort to continually improve our floor plans and elevations, Village Homes reserves the right to make alterations to the designs without prior notice.

