

{THE LEXINGTON}



PROPERTY FEATURES

2,110 sq. ft.
4 Bed | 3 Bath | 2 Car
1-Story

Structural Options:

- *option to add fireplace
- *convert bedroom to office
- *convert bedroom to tandem 3-car garage
- *see below for more structural options



VILLAGE HOMES

940.452.1275 | HOMESOFCHARACTER.COM

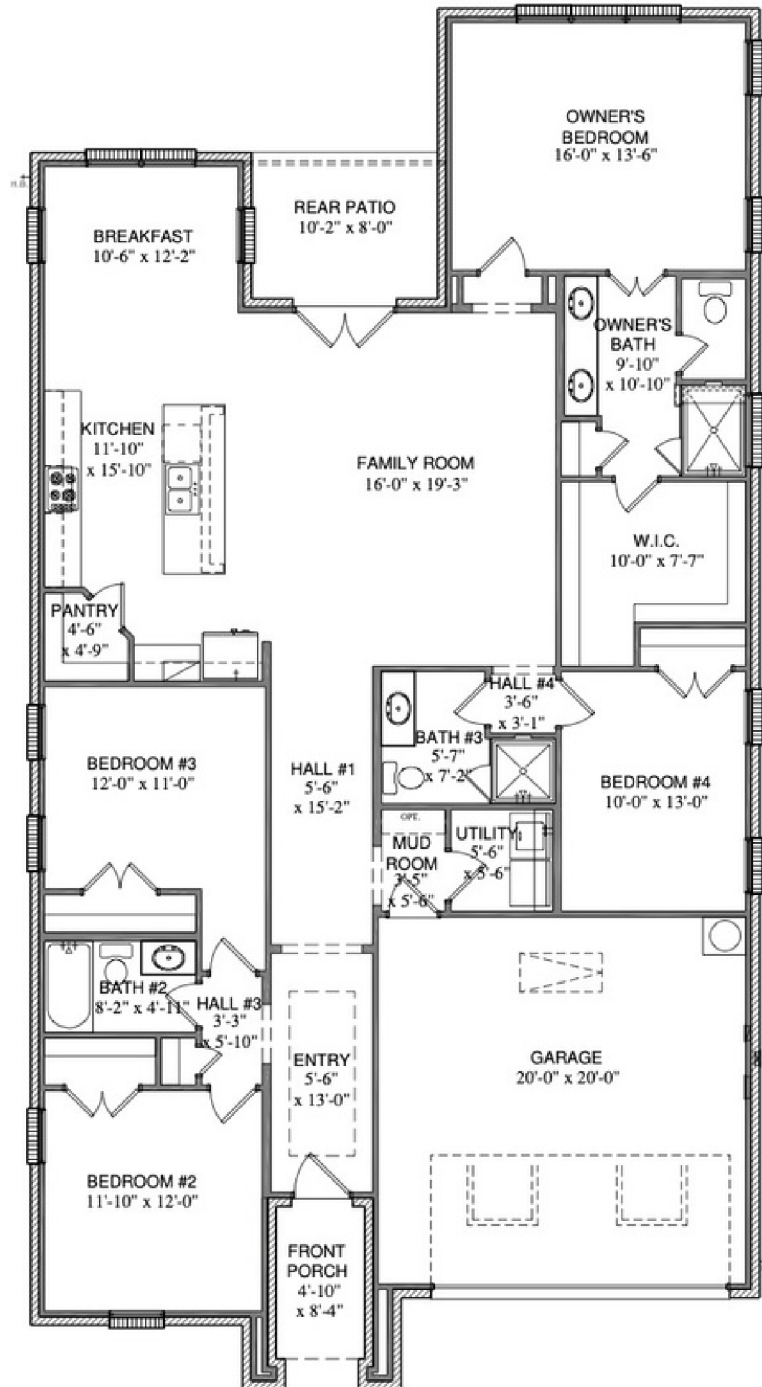
GET CONNECTED



{TIMELESS CRAFTSMANSHIP | INNOVATIVE LIVING}

*Actual plan does vary slightly from photo or artist's interpretation. See plan renderings below digital renderings.

C.40F.2110 LEXINGTON

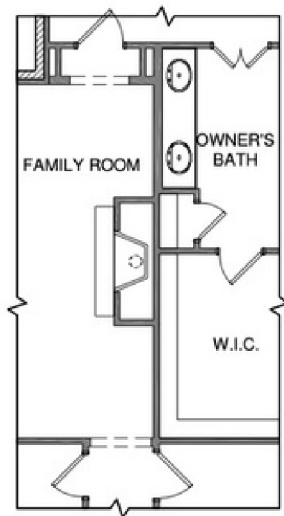


FIRST FLOOR
SQUARE FOOTAGE TOTALS

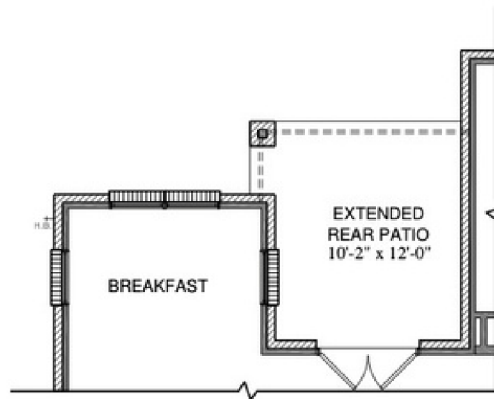
All plans and elevations are subject to change without prior notice. All Village Homes floor plans & elevations are copyrighted. Village Homes will enforce copyright laws to their fullest extent. All plan numbers are approximations of square footage and may vary with alternate elevations.

2110	1ST FLOOR
146	COVERED PORCHES
438	GARAGE
3694	TOTAL A.U.R.

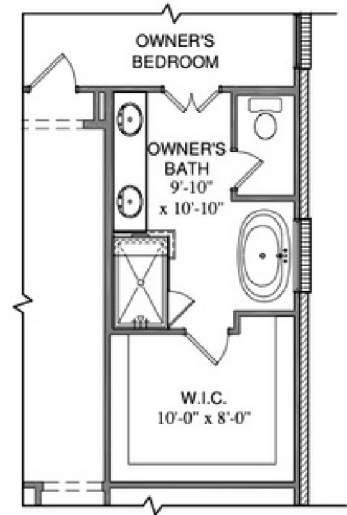
Please note: In an effort to continually improve our floor plans and elevations, Village Homes reserves the right to make alterations to the designs without prior notice.



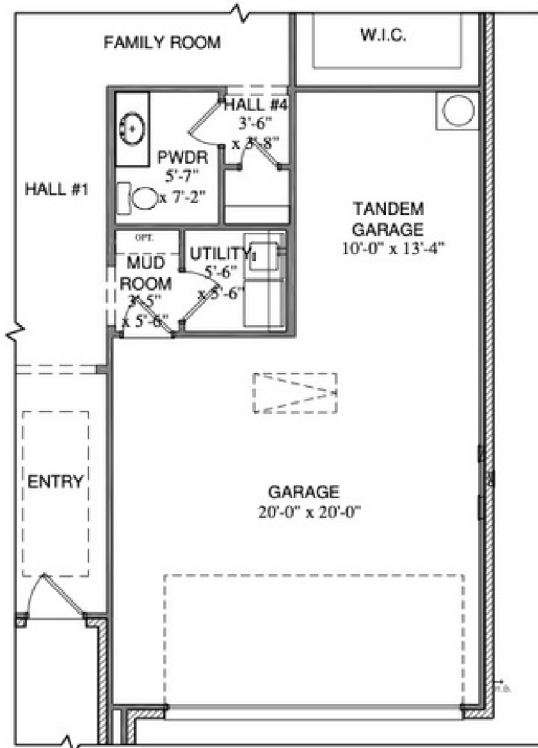
OPT. FIREPLACE



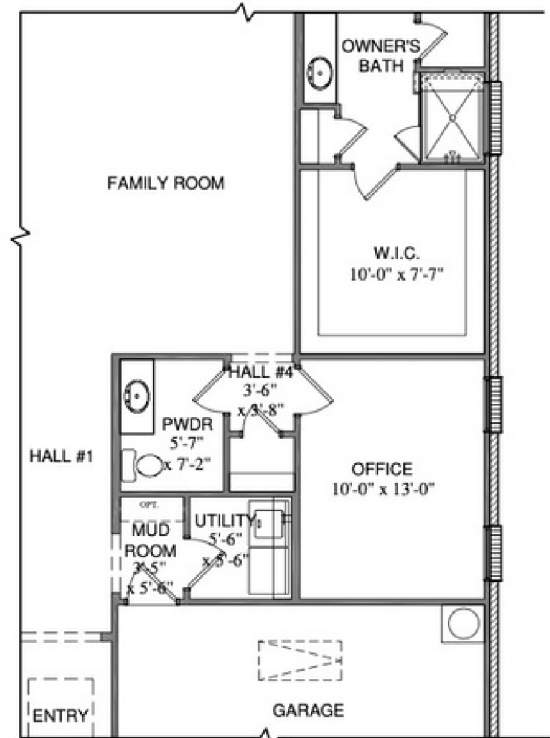
OPT. EXTENDED REAR PATIO



OPT. LUXURY OWNER'S BATH
W/ FREE-STANDING TUB



OPT. TANDEM GARAGE



OPT. OFFICE

All plans and elevations are subject to change without prior notice. All Village Homes floor plans & elevations are copyrighted. Village Homes will enforce copyright laws to their fullest extent. All plan numbers are approximations of square footage and may vary with alternate elevations.

C.40F.2110 LEXINGTON

Please note: In an effort to continually improve our floor plans and elevations, Village Homes reserves the right to make alterations to the designs without prior notice.