

# {THE CARMICHAEL}



## PROPERTY FEATURES

3,305 sq. ft.  
4 Bed | 3.5 Bath | 2 Car  
Flex | Game Room | 2-Story  
Structural Options:  
\*convert flex to study or bedroom with bath  
\*see below for more structural options



**VILLAGE HOMES**

940.452.1275 | HOMESOFCHARACTER.COM

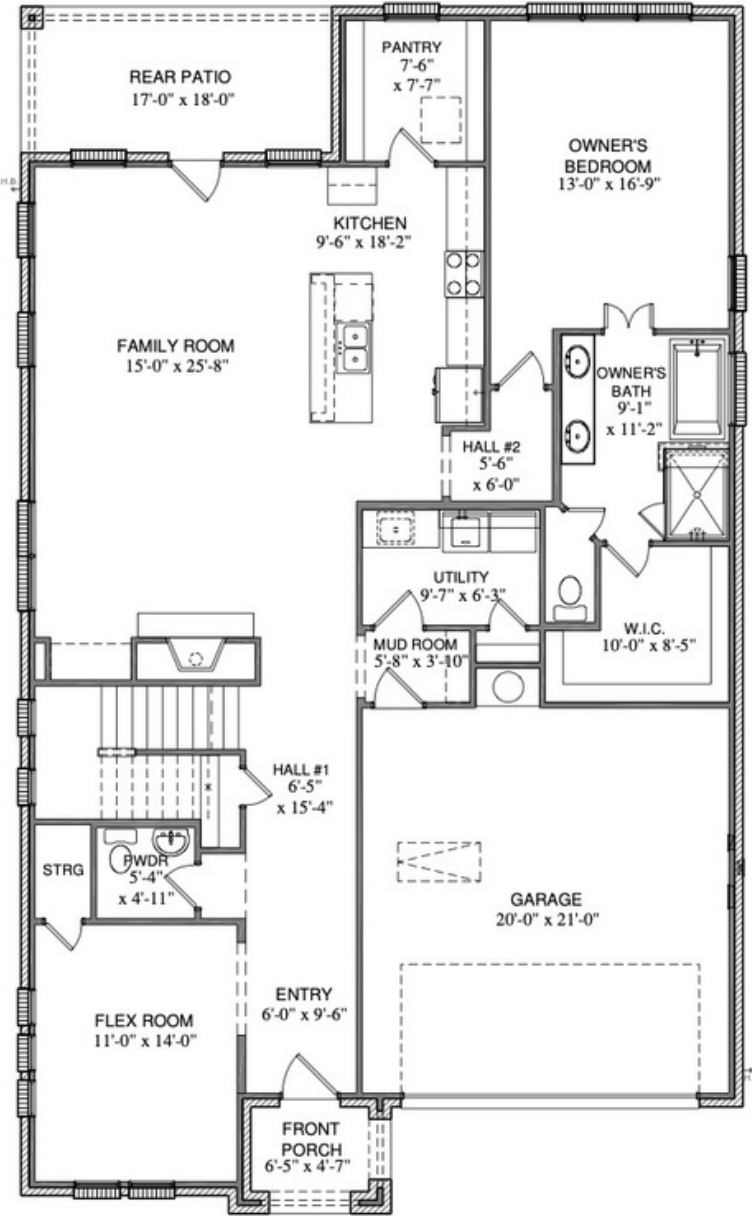
GET CONNECTED



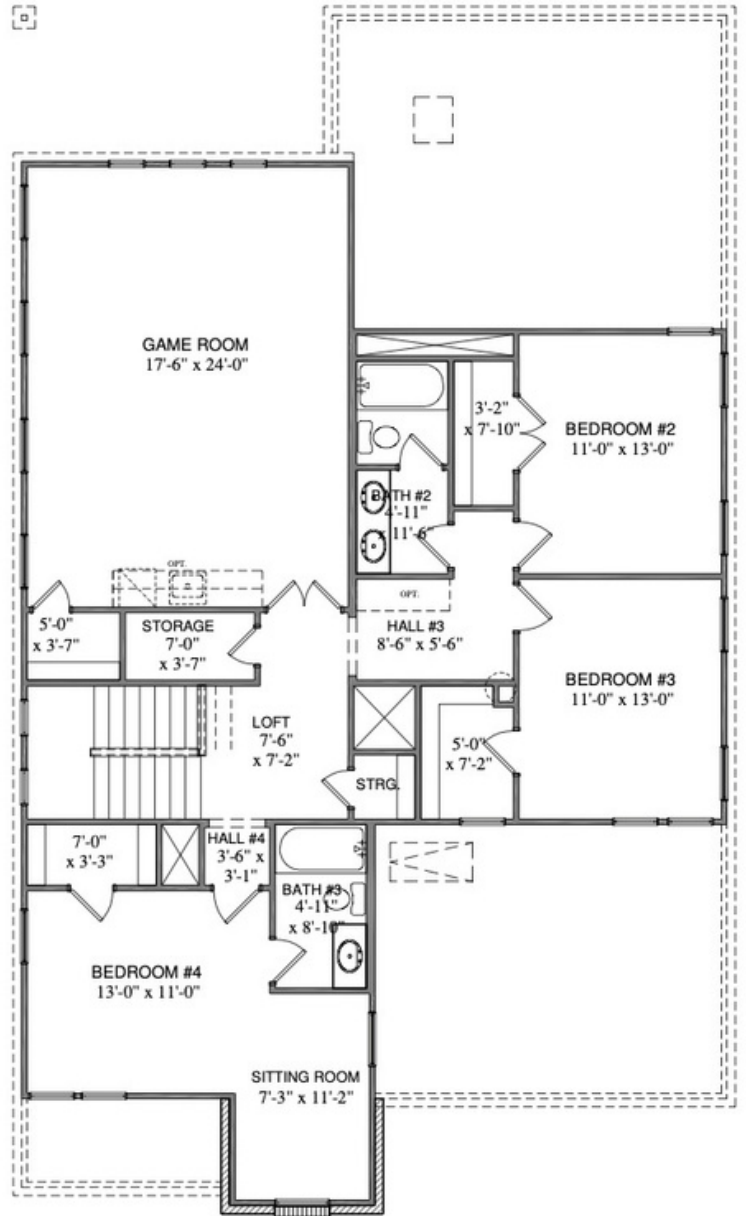
\*Actual plan may vary slightly from photo or artist's interpretation.

{TIMELESS CRAFTSMANSHIP | INNOVATIVE LIVING}

# C.40F.3305 CARMICHAEL



FIRST FLOOR



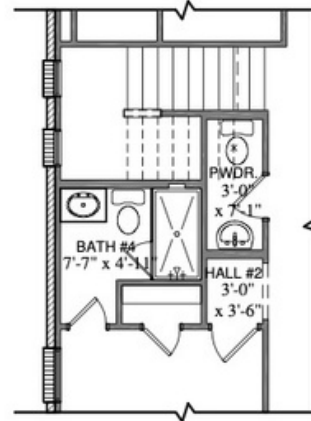
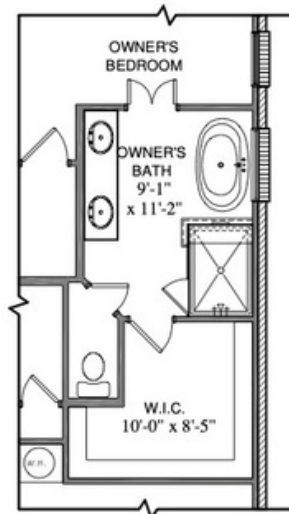
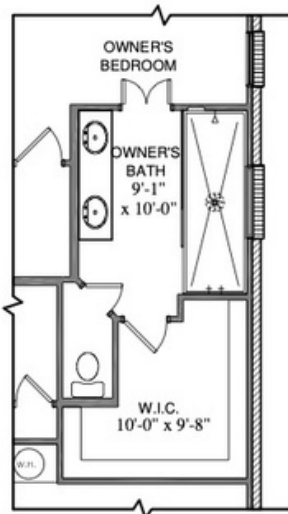
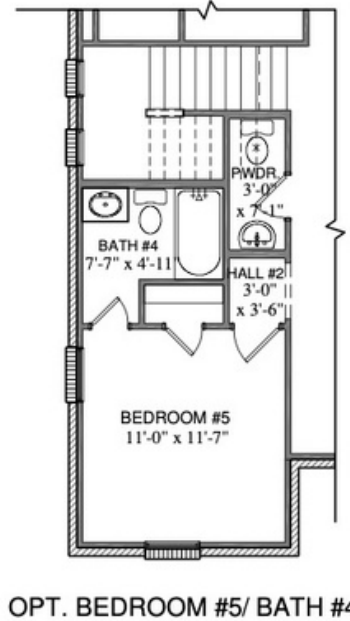
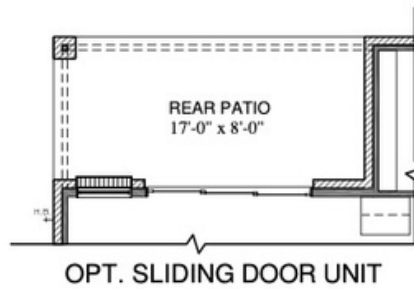
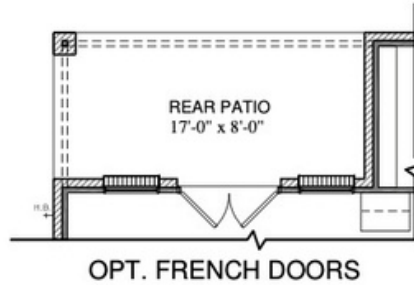
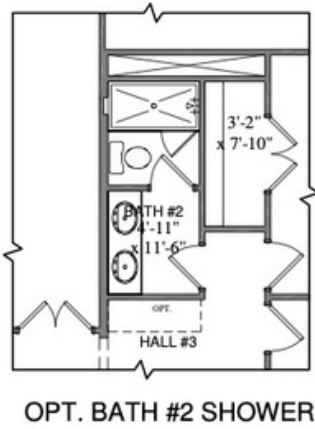
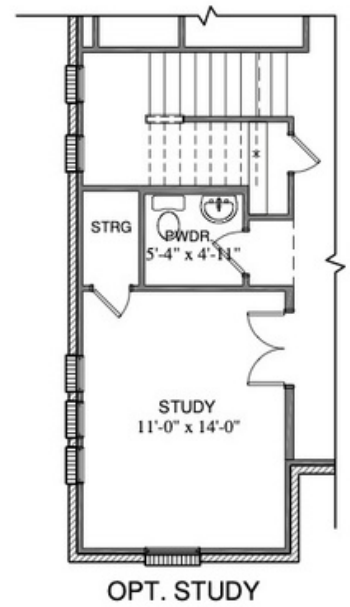
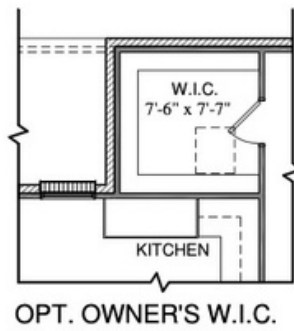
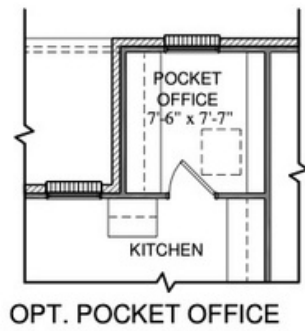
SECOND FLOOR

## SQUARE FOOTAGE TOTALS

1839	1ST FLOOR
1466	2ND FLOOR
182	COVERED PORCHES
462	GARAGE
3949	TOTAL A.U.R.

All plans and elevations are subject to change without prior notice. All Village Homes floor plans & elevations are copyrighted. Village Homes will enforce copyright laws to their fullest extent. All plan numbers are approximations of square footage and may vary with alternate elevations.

Please note: In an effort to continually improve our floor plans and elevations, Village Homes reserves the right to make alterations to the designs without prior notice.



OPT. OWNER'S BATH SHOWER

OPT. LUXURY OWNER'S BATH  
W/ FREE-STANDING TUB

OPT. BATH #4 SHOWER

All plans and elevations are subject to change without prior notice. All Village Homes floor plans & elevations are copyrighted. Village Homes will enforce copyright laws to their fullest extent. All plan numbers are approximations of square footage and may vary with alternate elevations.

# C.40F.3305 CARMICHAEL

Please note: In an effort to continually improve our floor plans and elevations, Village Homes reserves the right to make alterations to the designs without prior notice.