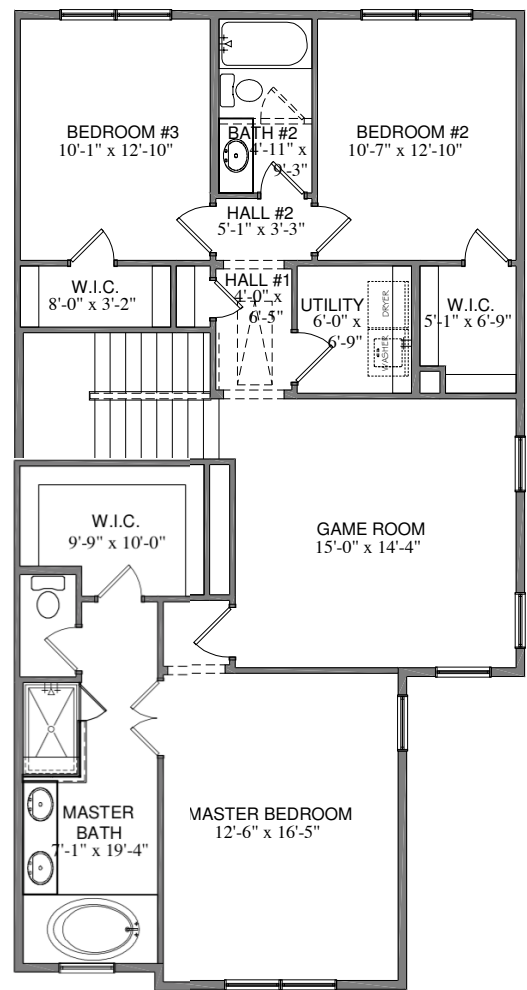
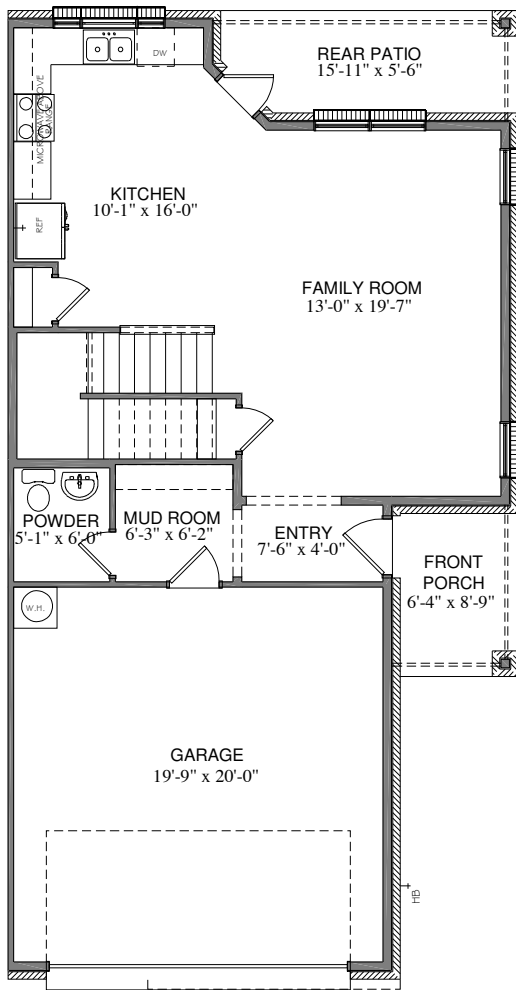


6303 Oakbend Circle

Upgraded Kitchen
with Island



Luxury Master Bath

ELEVATION "A" UNIT # 1

SQUARE FOOTAGE TOTALS

743	1ST FLOOR
1253	2ND FLOOR
139	COVERED PORCHES
446	GARAGE
2581	TOTAL A.U.R.

All plans and elevations are subject to change without prior notice. All Village Homes floor plans & elevations are copyrighted. Village Homes will enforce copyright laws to their fullest extent. All plan numbers are approximations of square footage and may vary with alternate elevations.

Please note: In an effort to continually improve our floor plans and elevations, Village Homes reserves the right to make alterations to the designs without prior notice.