

625 Hummingbird Dr, Aledo, TX {THE CARMICHAEL}



*Digital rendering, floor plan, design, colors, landscaping, etc. are subject to changes from photo or artist's interpretation shown herein.

PROPERTY FEATURES

3,249 sq. ft.
4 Bed | 3.5 Bath | 2 Car
Flex | Game Room | 2-Story


VILLAGE HOMES

940.452.1275 | HOMESOFCHARACTER.COM

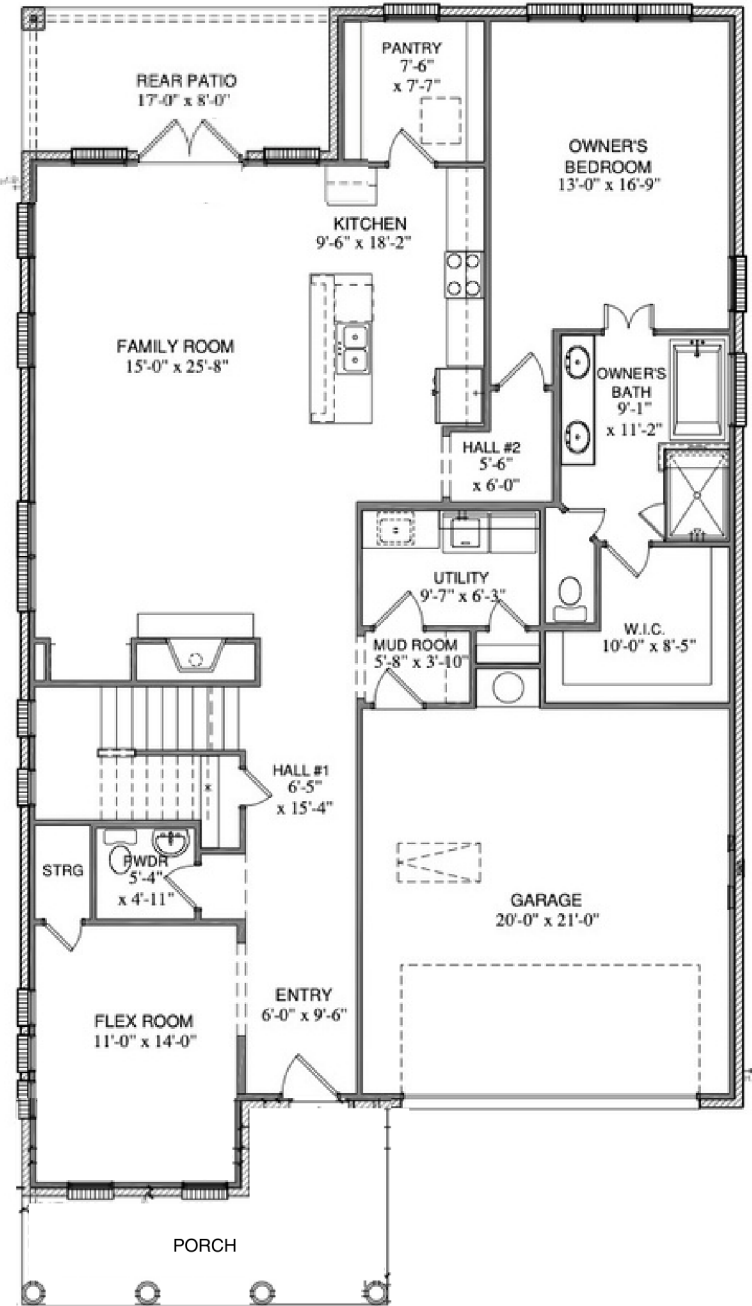
GET CONNECTED



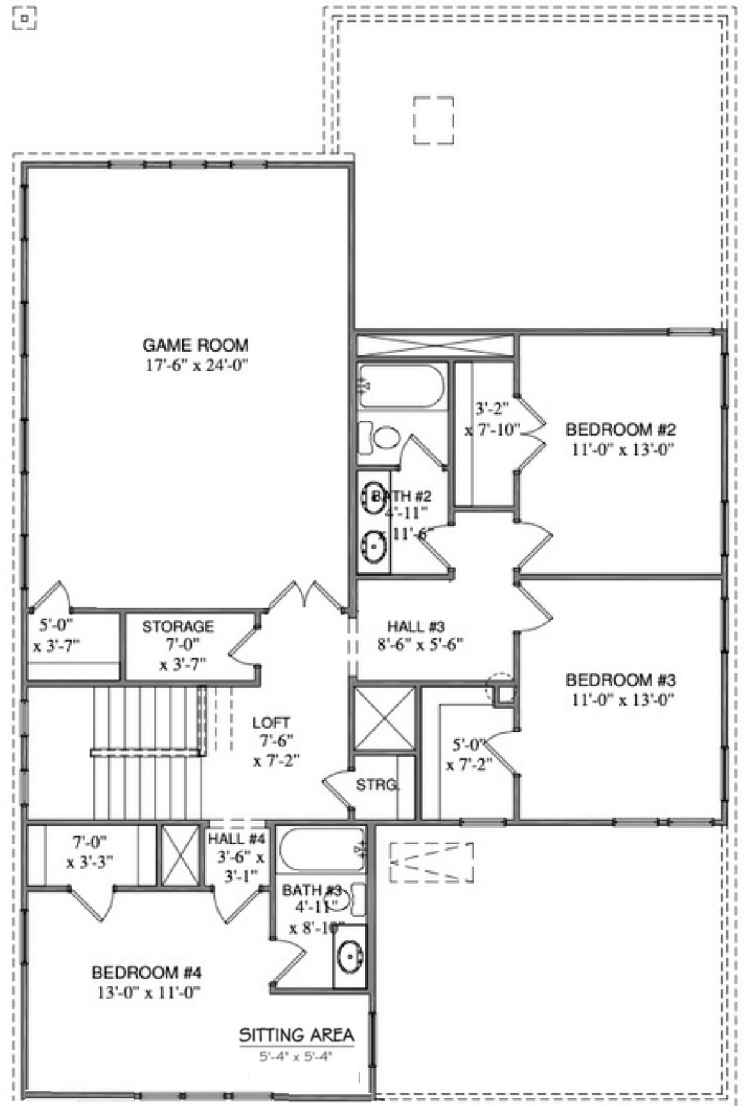
*Actual plan may vary slightly from photo or artist's interpretation.

{TIMELESS CRAFTSMANSHIP | INNOVATIVE LIVING}

C.40F.3305 CARMICHAEL



FIRST FLOOR



SECOND FLOOR

SQUARE FOOTAGE TOTALS

1839	1ST FLOOR
1410	2ND FLOOR
205	COVERED PORCHES
462	GARAGE
3916	TOTAL A.U.R.

All plans and elevations are subject to change without prior notice. All Village Homes floor plans & elevations are copyrighted. Village Homes will enforce copyright laws to their fullest extent. All plan numbers are approximations of square footage and may vary with alternate elevations.

Please note: In an effort to continually improve our floor plans and elevations, Village Homes reserves the right to make alterations to the designs without prior notice.