

{605 EAST THOROUGHbred}



PROPERTY FEATURES

2,720 sq. ft.
4 Bed | 3 Bath | 2 Car Garage
Office | Flex Room | Luxurious Master Suite

WENDY JONES

817.657.6134 | wendy@homesofcharacter.com



VILLAGE HOMES

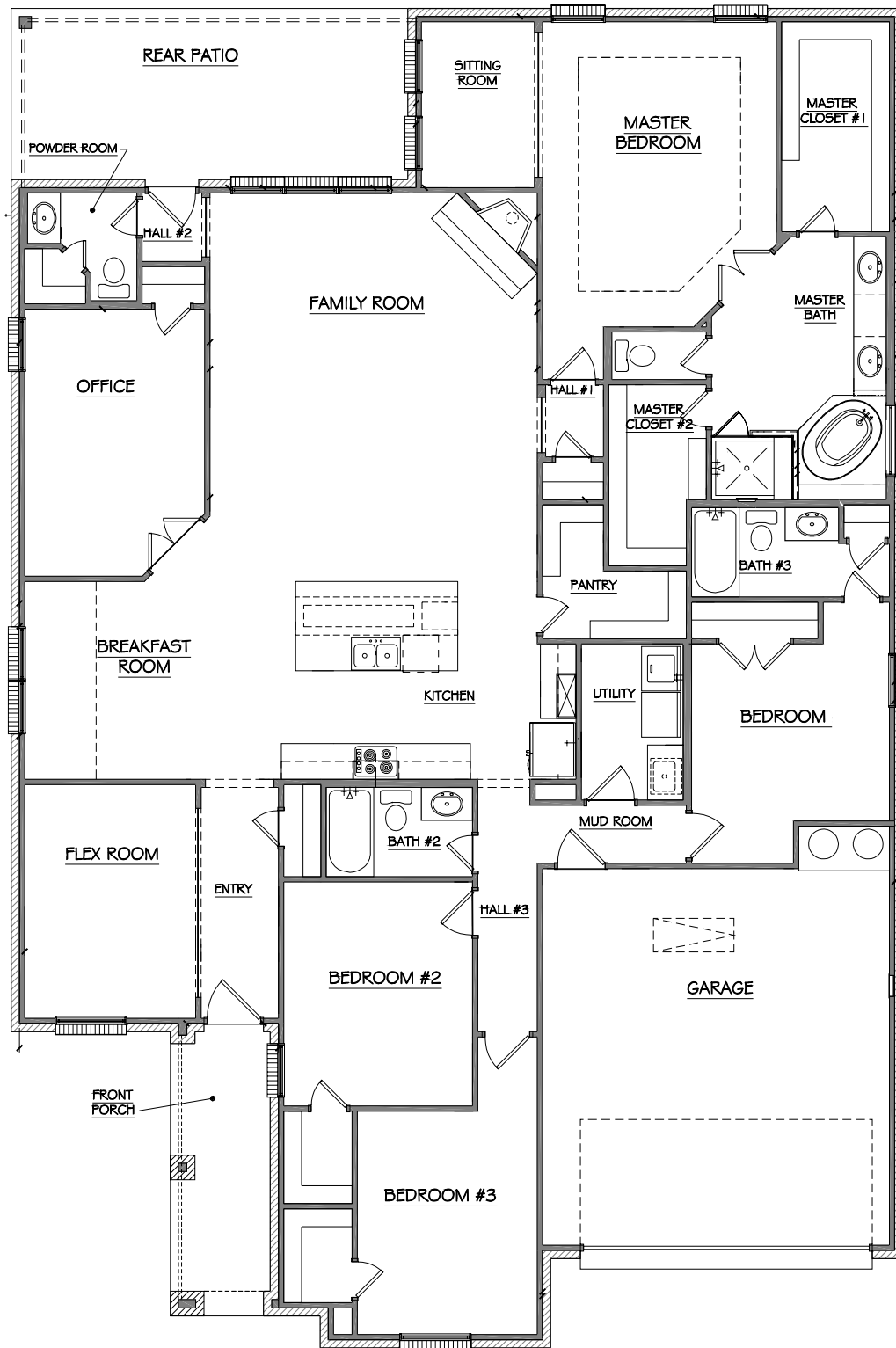
817.737.3377 | HOMESOFCHARACTER.COM

GET CONNECTED



*Actual plan may vary slightly from artist's interpretation.

{TIMELESS CRAFTSMANSHIP | INNOVATIVE LIVING}



Square Footage Totals

1974 1ST FLOOR
 1344 2ND FLOOR
 3318 TOTAL A/C
 88 FRONT PORCH
 102 REAR PATIO
 673 GARAGE



Please note: In an effort to continually improve our floor plans and elevations, Village Homes reserves the right to make alterations to the designs without prior notice.

All plans and elevations are subject to change without prior notice. All Village Homes floor plans & elevations are copyrighted. Village Homes will enforce copyright laws to their fullest extent. All plan numbers are approximations of square footage and may vary with alternate elevations.