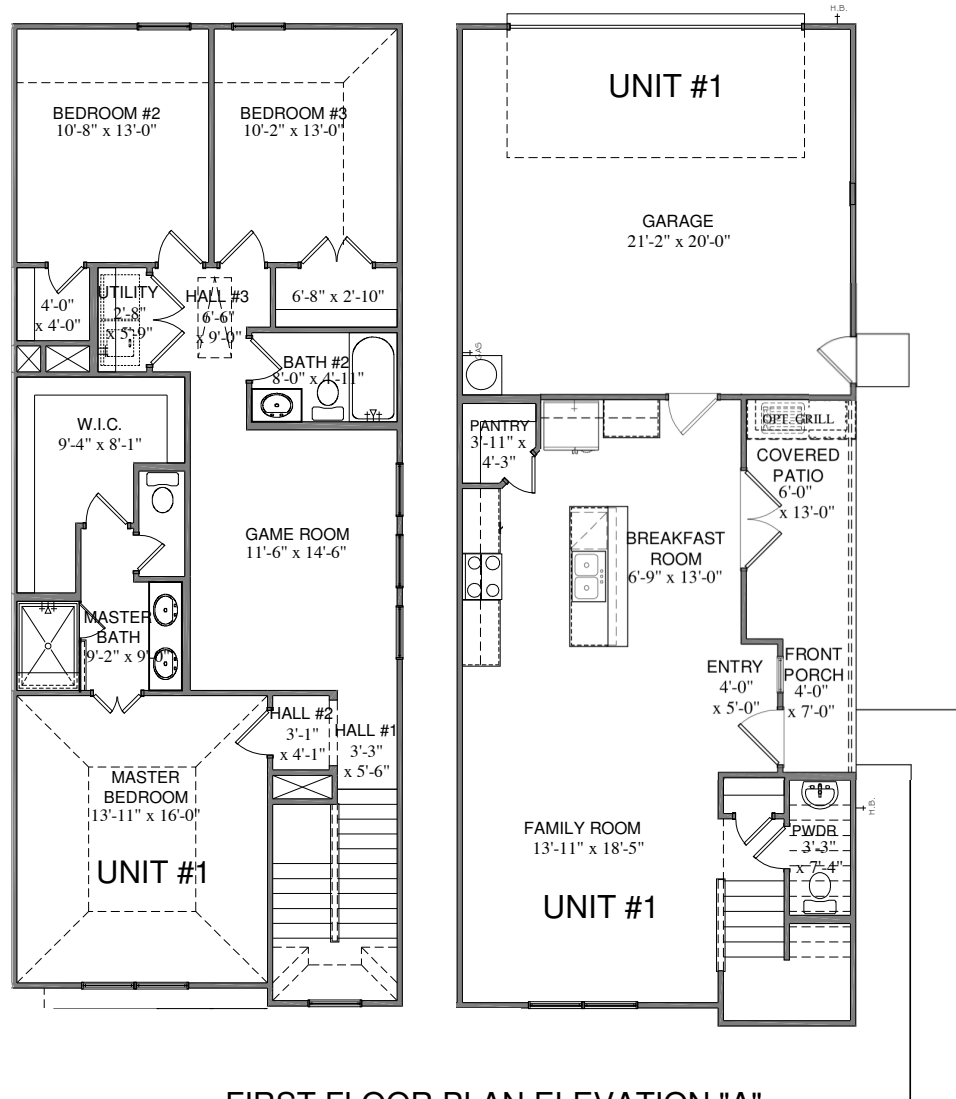


3484 VISTA HIGHLANDS DR, UNIT 1 | BRIGGS



FIRST FLOOR PLAN ELEVATION "A" SQUARE FOOTAGE TOTALS UNIT #1

640	1ST FLOOR
1098	2ND FLOOR
1738	TOTAL A/C
446	GARAGE
97	FRONT PORCH



All plans and elevations are subject to change without prior notice. All Village Homes floor plans & elevations are copyrighted. Village Homes will enforce copyright laws to their fullest extent. All plan numbers are approximations of square footage and may vary with alternate elevations.

Please note: In an effort to continually improve our floor plans and elevations, Village Homes reserves the right to make alterations to the designs without prior notice.