



3464 VISTA HIGHLANDS LN



PROPERTY FEATURES

1,643 sq. ft.
3 Bed | 2.5 Bath | 2 Car
Spacious Owner's Suite | Loft | Mud Room | Open Concept Living

Please contact **JYOTI BANIPAL**
972.589.7026 | jyoti@homesofcharacter.com
or visit homesofcharacter.com for more information!



VILLAGE HOMES

817.737.3377 | HOMESOFCHARACTER.COM | OVERLOOK

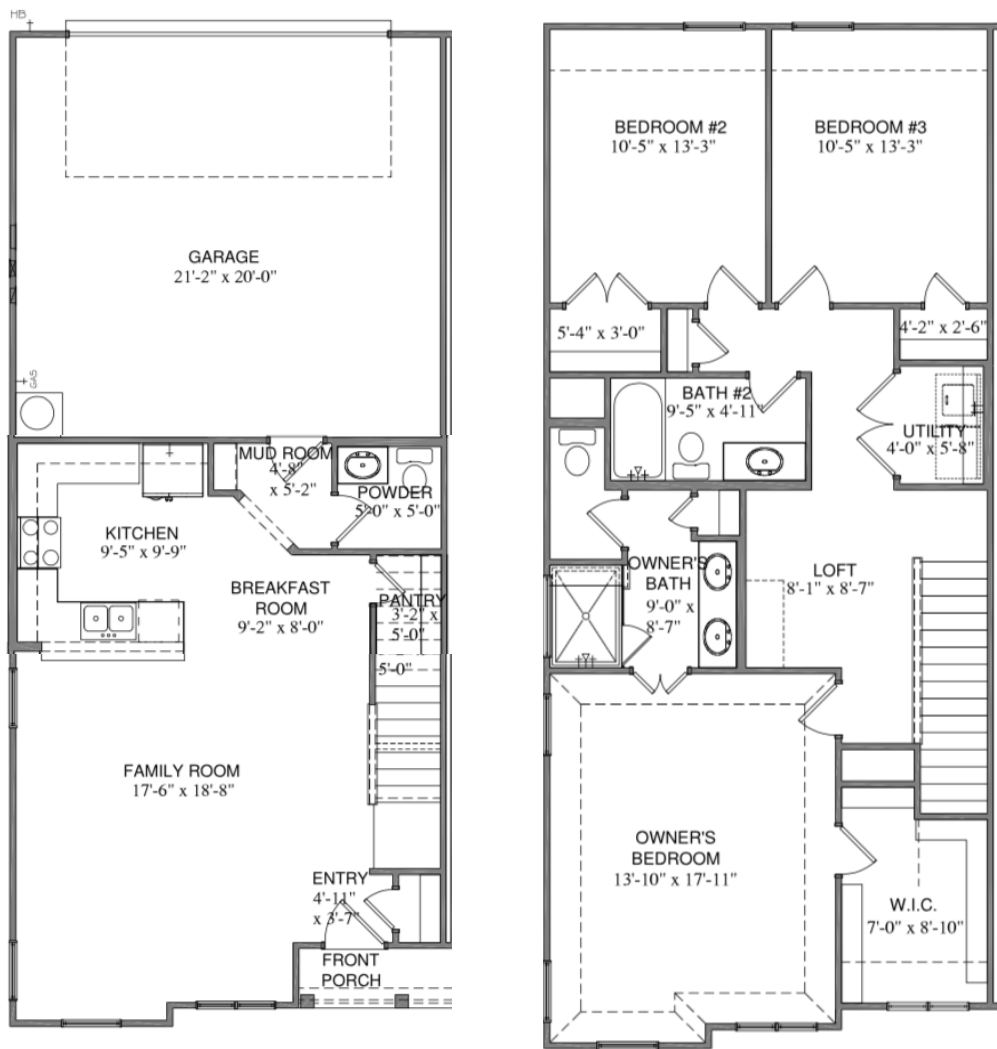
*Actual plan may vary slightly from artist's interpretation.

GET CONNECTED



{TIMELESS CRAFTSMANSHIP | INNOVATIVE LIVING}

3464 VISTA HIGHLANDS DR, UNIT 1 | AZALEA



SQ FOOTAGE

613	1ST FLOOR
1030	2ND FLOOR
1643	TOTAL A/C
23	FRONT PORCH
446	GARAGE

All plans and elevations are subject to change without prior notice. All Village Homes floor plans & elevations are copyrighted. Village Homes will enforce copyright laws to their fullest extent. All plan numbers are approximations of square footage and may vary with alternate elevations.

Please note: In an effort to continually improve our floor plans and elevations, Village Homes reserves the right to make alterations to the designs without prior notice.