

{ 338 Nursery Lane }

*\$545,000 - Fall Move In!*



## PRO PERTY FEA TURES

2059 sq. ft.

3 Beds | 2.5 Baths | 2 Car rear-entry, oversized garage |  
Open Family Room, Kitchen and Entertainment Space on Main Level | Luxurious  
Owner's Suite with Private Office Separate from Secondary Bedrooms | Large Second  
Floor Utility with Built -Ins | Loft or Second Floor Living Space

---

Please Contact Nadeen Roberts  
817.692.6792 | [nadeen@homesofcharacter.com](mailto:nadeen@homesofcharacter.com)  
or visit [homesofcharacter.com](http://homesofcharacter.com) for more information!



GET CONNECTED

817.737.3377 | [HOMESOFCHARACTER.COM](http://HOMESOFCHARACTER.COM)

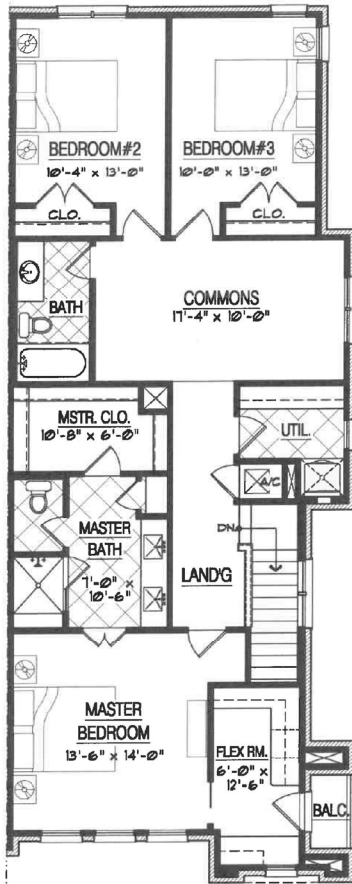


{ TIMELESS CRAFTSMANSHIP | INNOVATIVE LIVING }

# 338 Nursery Lane

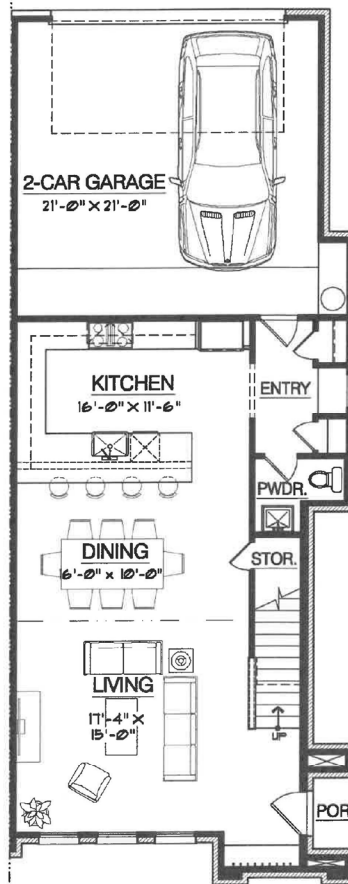
VH.2059

2126



**SECOND FLOOR PLAN**

*Square Footage Totals*  
 845 Main Level  
 1,281 Upper Level  
 2,126 Total Under Roof



**GROUND FLOOR PLAN**



PLEASE NOTE, IN AN EFFORT TO CONTINUALLY IMPROVE OUR FLOOR PLANS AND ELEVATIONS, VILLAGE HOMES RESERVES THE RIGHT TO MAKE ALTERATIONS TO THE DESIGNS WITHOUT PRIOR NOTICE.

ALL PLANS AND ELEVATIONS ARE SUBJECT TO CHANGE WITHOUT PRIOR NOTICE. ALL VILLAGE HOMES FLOOR PLANS & ELEVATIONS ARE COPYRIGHTED. VILLAGE HOMES WILL ENFORCE COPYRIGHT LAWS TO THEIR FULLEST EXTENT. ALL PLAN NUMBERS ARE APPROXIMATIONS OF SQUARE FOOTAGE AND MAY VARY WITH ALTERNATE ELEVATIONS.

All plans and elevations are subject to change without prior notice. All Village Homes floor plans & elevations are copyrighted. Village Homes will enforce copyright laws to their fullest extent. All plan numbers are approximations of square footage and may vary with alternate elevations.

Please note: In an effort to continually improve our floor plans and elevations, Village Homes reserves the right to make alterations to the designs without prior notice.