

{14436 LOMAC DR}



PROPERTY FEATURES*

3,166 sq. ft.
4 Bed | 4.5 Bath | 2 Car
Luxury Owner's Suite | Pocket Office | Loft
Extended Rear Patio | Game Room

Please contact MIRANDA CHAN
817.992.6211 | miranda@homesofcharacter.com
or visit homesofcharacter.com for more information!


VILLAGE HOMES
817.737.3377 | HOMESOFCHARACTER.COM

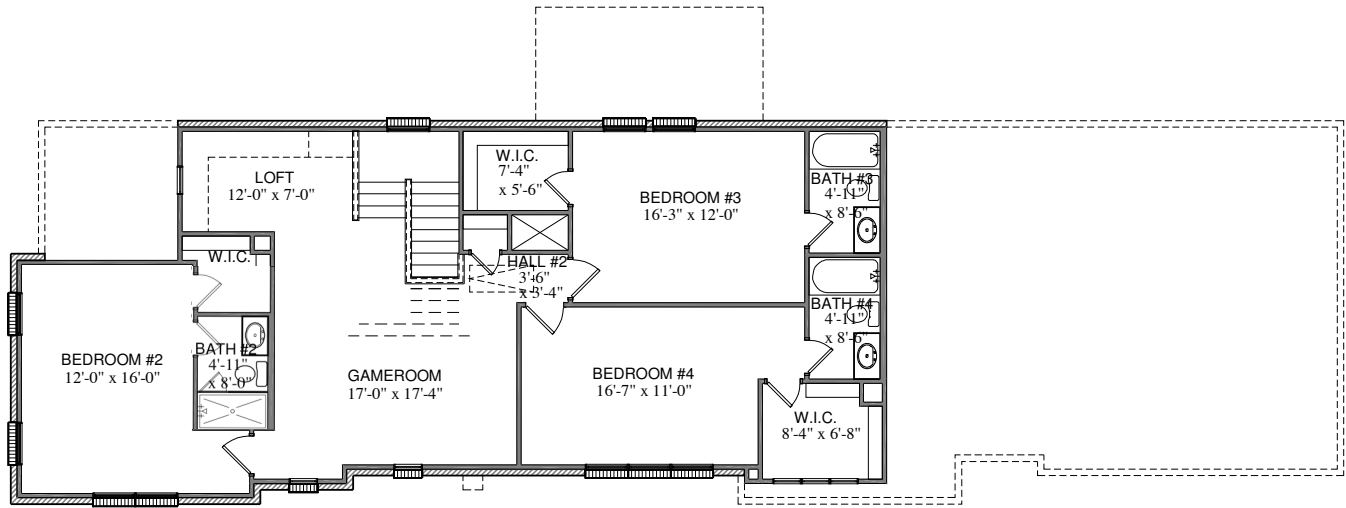
GET CONNECTED



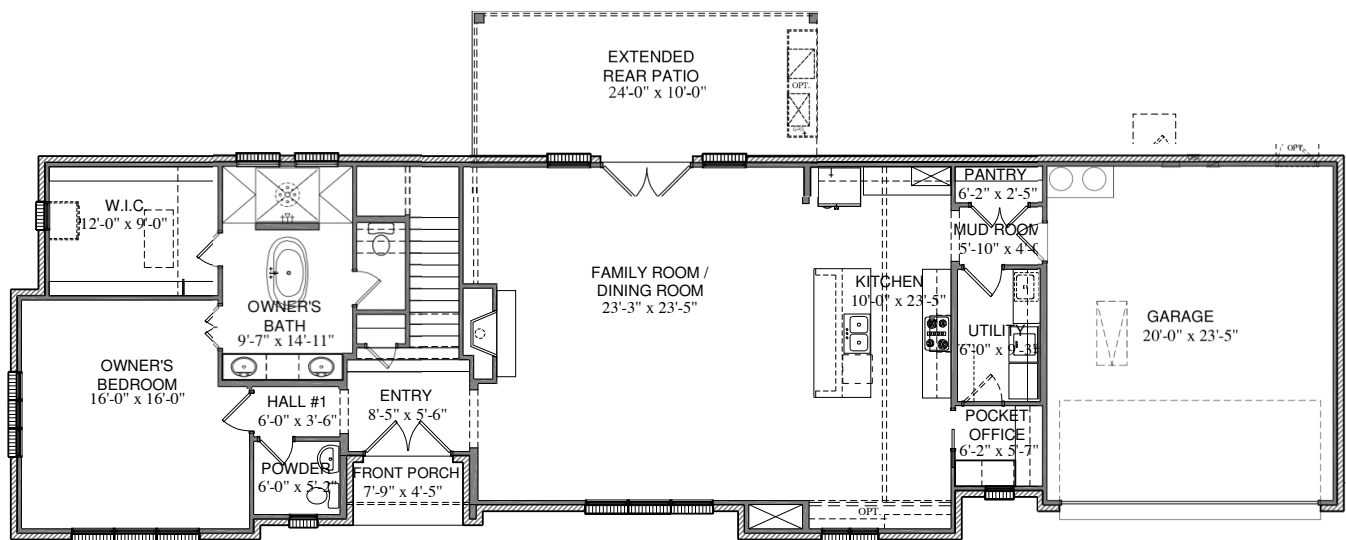
*Actual plan may vary slightly from artist's interpretation. Rendering has been changed slightly.

{TIMELESS CRAFTSMANSHIP | INNOVATIVE LIVING}

EASTLAKE



SECOND FLOOR PLAN



FIRST FLOOR PLAN

**Plan is flipped.

All plans and elevations are subject to change without prior notice. All Village Homes floor plans & elevations are copyrighted. Village Homes will enforce copyright laws to their fullest extent. All plan numbers are approximations of square footage and may vary with alternate elevations.

SQ FOOTAGE

1797	1ST FLOOR
1369	SECOND FLOOR
3166	TOTAL A/C
192	FRONT PORCH
521	GARAGE
240	REAR PATIO



Please note: In an effort to continually improve our floor plans and elevations, Village Homes reserves the right to make alterations to the designs without prior notice.