

{14432 WALSH}

\$647,100 - Summer Move In!

Example Photo



PROPERTY FEATURES

2794 sq. ft.

4 Bed | 3 Bath | 2 Car w-Storage

Vaulted Family Room | Luxurious Owner's Suite | Large Utility w-Workspace
Sliding Glass Door | Freestanding Tub | Fireplace | Game Room

Please contact MIRANDA CHAN

817.992.6211 | miranda@homesofcharacter.com

or visit homesofcharacter.com for more information!



VILLAGE HOMES

817.737.3377 | HOMESOFCHARACTER.COM

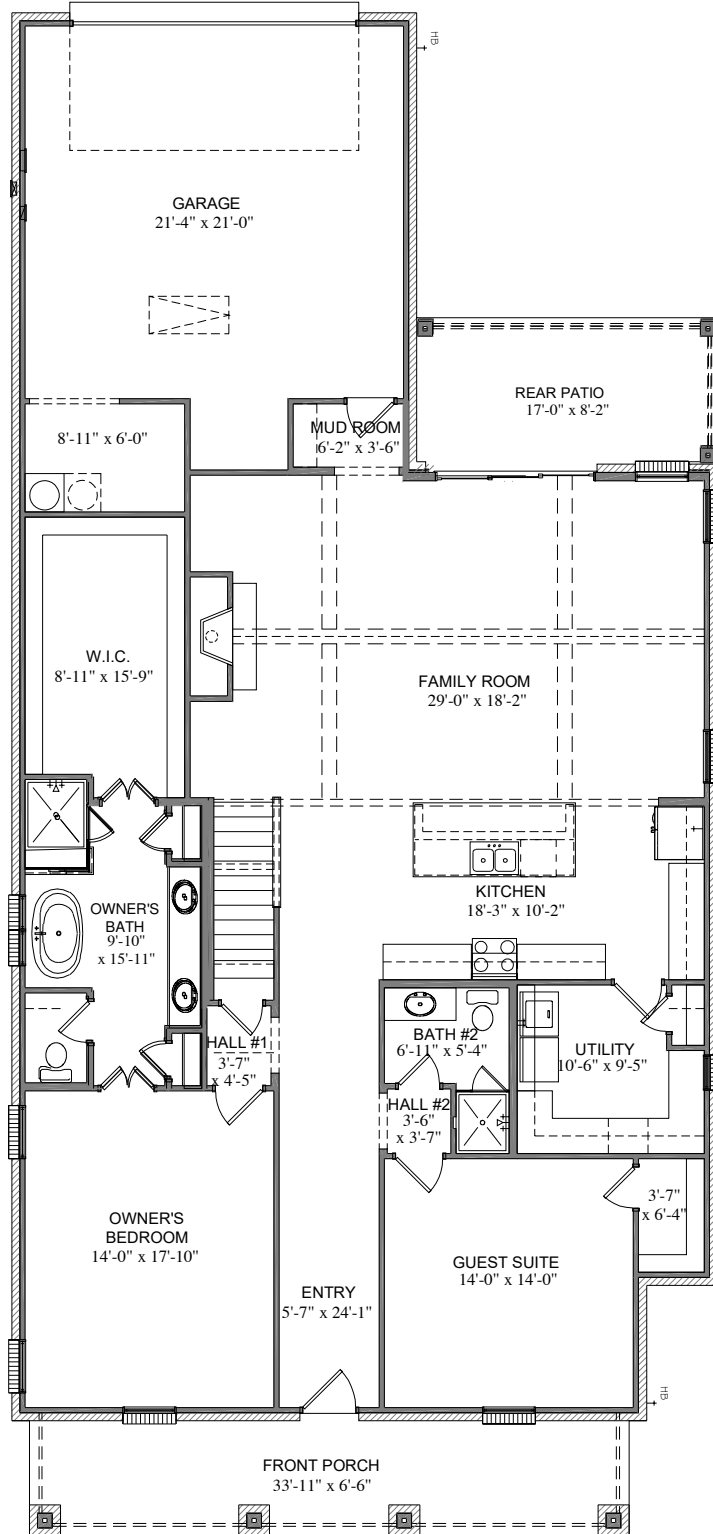
GET CONNECTED



{TIMELESS CRAFTSMANSHIP | INNOVATIVE LIVING}

14423 Walsh Ave

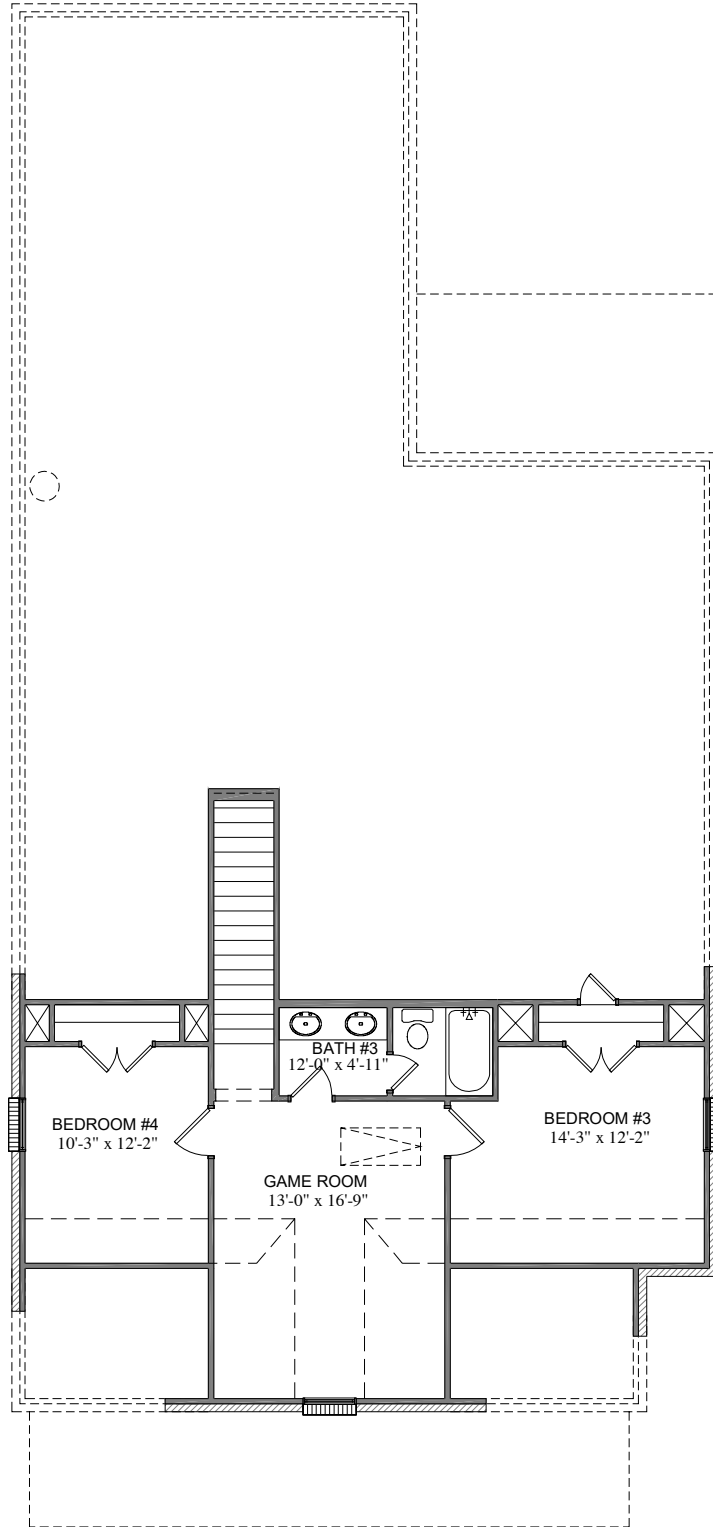
C.40R.2834
LIMOGES



All plans and elevations are subject to change without prior notice. All Village Homes floor plans & elevations are copyrighted. Village Homes will enforce copyright laws to their fullest extent. All plan numbers are approximations of square footage and may vary with alternate elevations.

Please note: In an effort to continually improve our floor plans and elevations, Village Homes reserves the right to make alterations to the designs without prior notice.

C.40R.2834
LIMOGES



All plans and elevations are subject to change without prior notice. All Village Homes floor plans & elevations are copyrighted. Village Homes will enforce copyright laws to their fullest extent. All plan numbers are approximations of square footage and may vary with alternate elevations.

Please note: In an effort to continually improve our floor plans and elevations, Village Homes reserves the right to make alterations to the designs without prior notice.

