

{14300 LOMAC DR}



PROPERTY FEATURES

3,131 sq. ft.
4 Bed | 4.5 Bath | 2 Car
Luxury Owner's Suite | Pocket Office | Loft
Extended Rear Patio | Game Room

Please contact MIRANDA CHAN
817.992.6211 | miranda@homesofcharacter.com
or visit homesofcharacter.com for more information!


VILLAGE HOMES
817.737.3377 | HOMESOFCHARACTER.COM

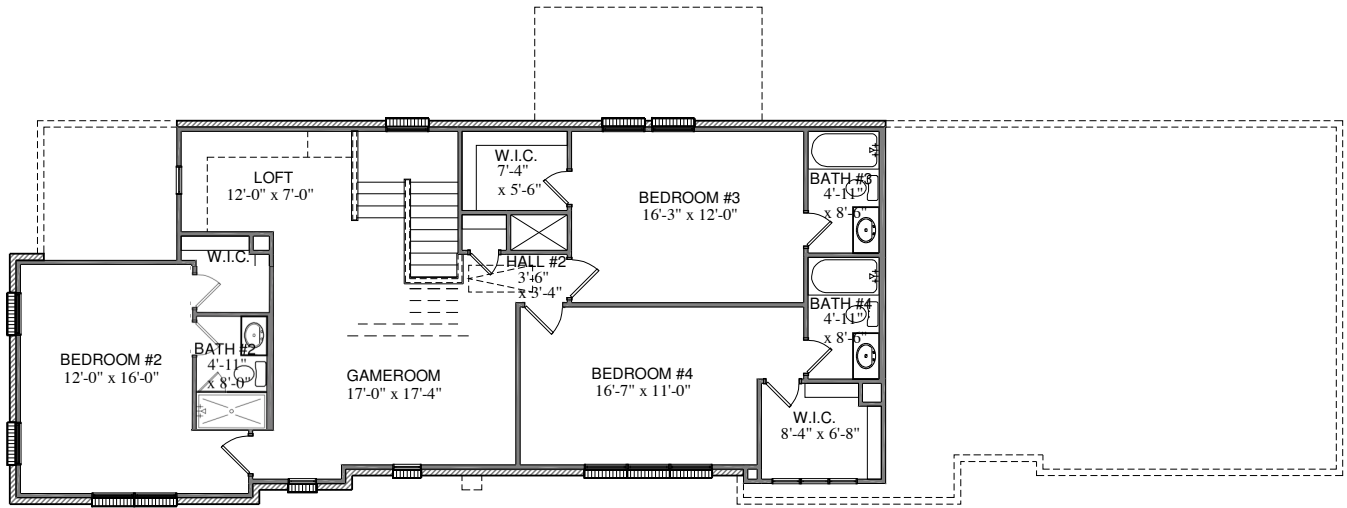
GET CONNECTED



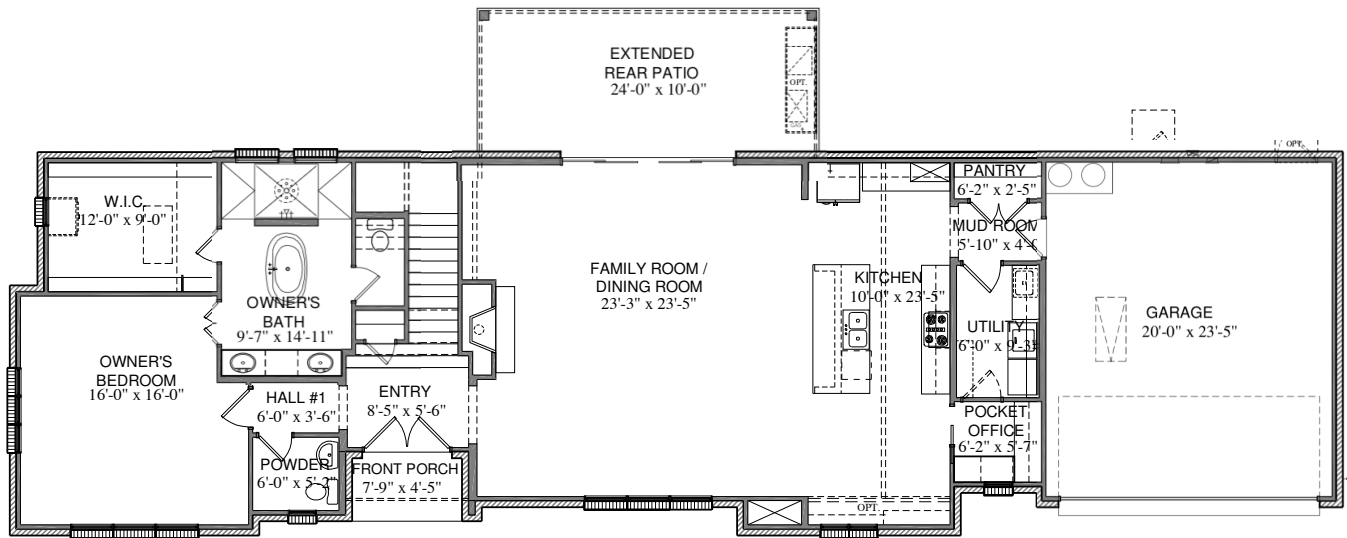
*Actual plan may vary slightly from artist's interpretation.

{TIMELESS CRAFTSMANSHIP | INNOVATIVE LIVING}

EASTLAKE



SECOND FLOOR PLAN



FIRST FLOOR PLAN

*Plan is flipped.

All plans and elevations are subject to change without prior notice. All Village Homes floor plans & elevations are copyrighted. Village Homes will enforce copyright laws to their fullest extent. All plan numbers are approximations of square footage and may vary with alternate elevations.

SQ FOOTAGE

1755	1ST FLOOR
1376	SECOND FLOOR
3131	TOTAL A/C
39	PORCH
492	GARAGE
229	REAR PATIO



Please note: In an effort to continually improve our floor plans and elevations, Village Homes reserves the right to make alterations to the designs without prior notice.